

Floating Potential detected and due to capacitive voltage tap of the 22kV cable termination not properly grounded.



Asset: 22kV Cable termination, inner cone type

PD sensor: TEV, Airborne Ultrasound

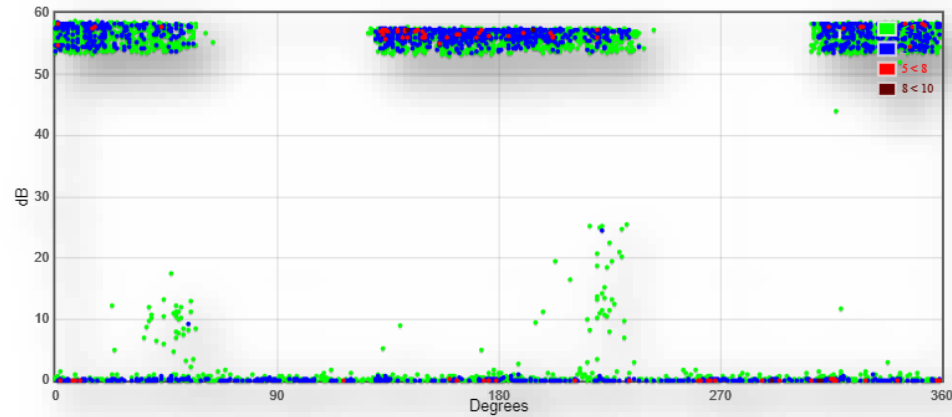
10 May 2024 High magnitude PD detected

14 May 2024 Capacitive voltage tap of cable termination was found not properly grounded.

No PD detected after rectification

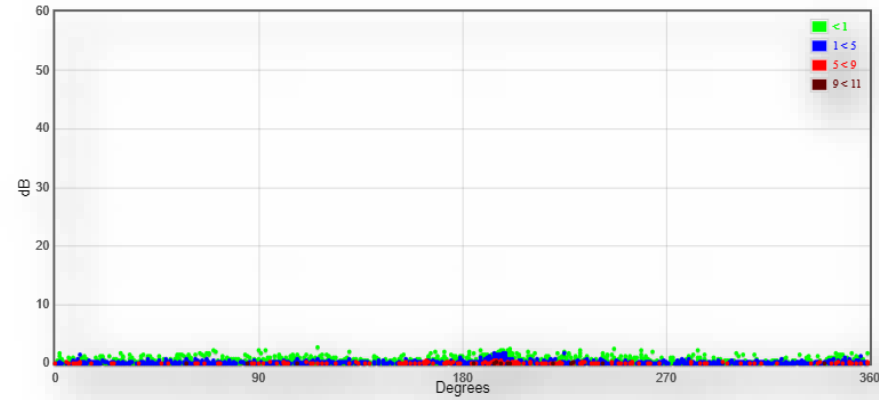
Comparison of TEV

TEV: 59dBmV, 7.34ppc



High magnitude PD detected before rectification

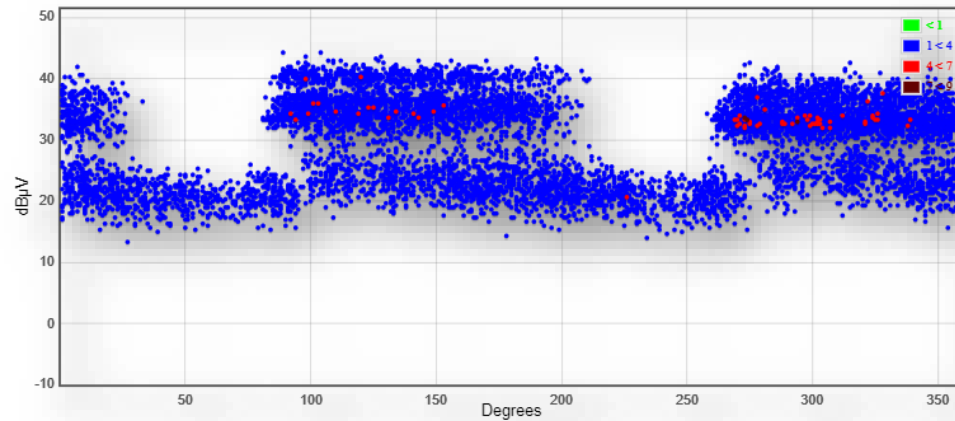
TEV: 2dBmV, 0ppc



No PD detected after rectification

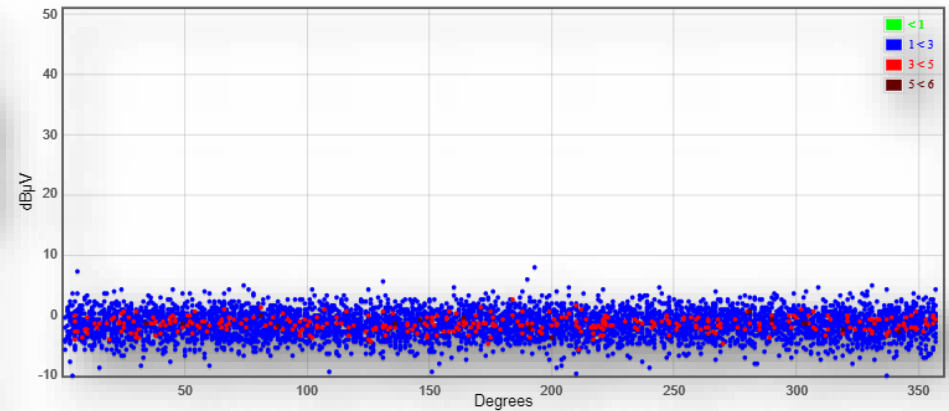
Comparison of Airborne Ultrasound

Airborne Ultrasound: 31dB μ V



Abnormal Ultrasound detected before rectification

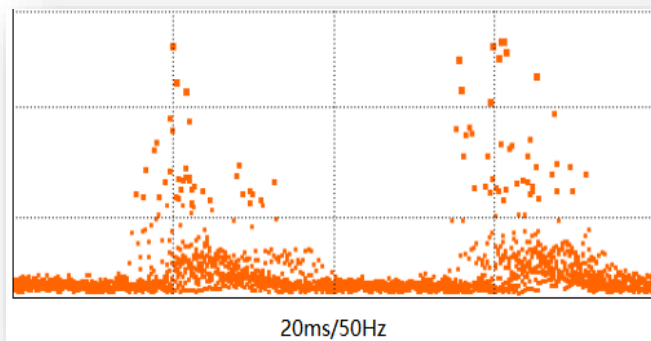
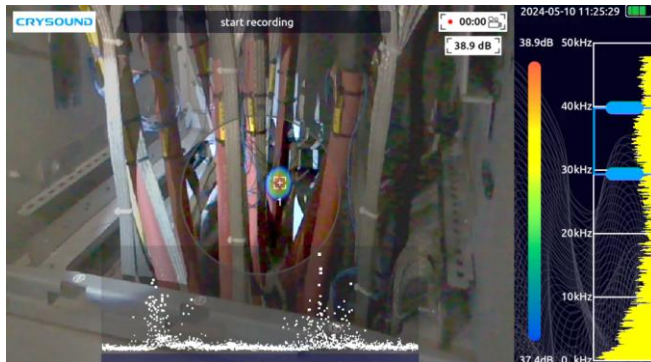
Airborne Ultrasound: -2dB μ V



No Abnormal Ultrasound after rectification

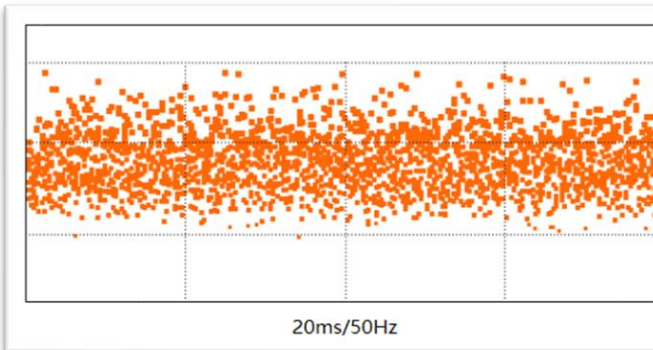
Comparison of Airborne Ultrasound from Other OEM

Airborne Ultrasound: 39dB μ V



Abnormal Ultrasound detected before rectification

Airborne Ultrasound: 2dB μ V



No Abnormal Ultrasound after rectification