

Visible discharge at the cable lug of the 22kV Cable termination, outer cone type



White residue due to hardened electrical grease.

Asset: 22kV cable termination, outer cone type

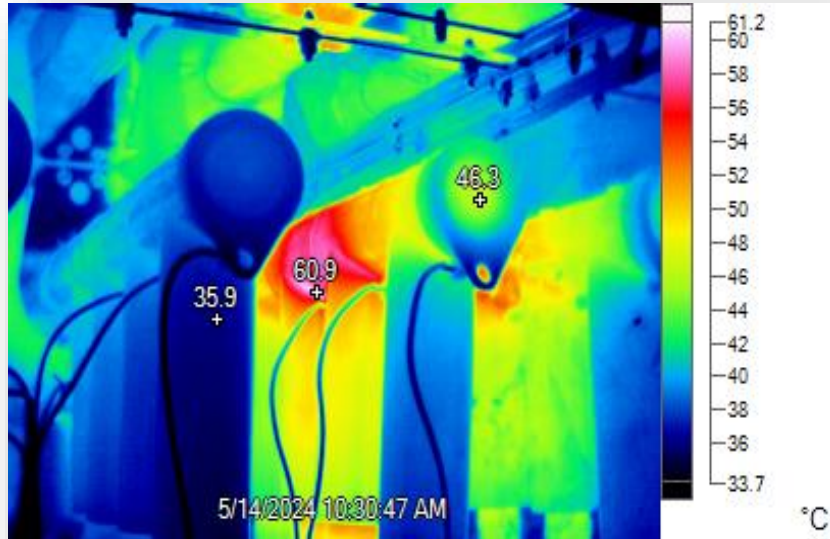
Sensor: Infra-red Thermal Scanning, TEV

14 May 2024 Thermal abnormality detected, and PD detected by using TEV sensors.

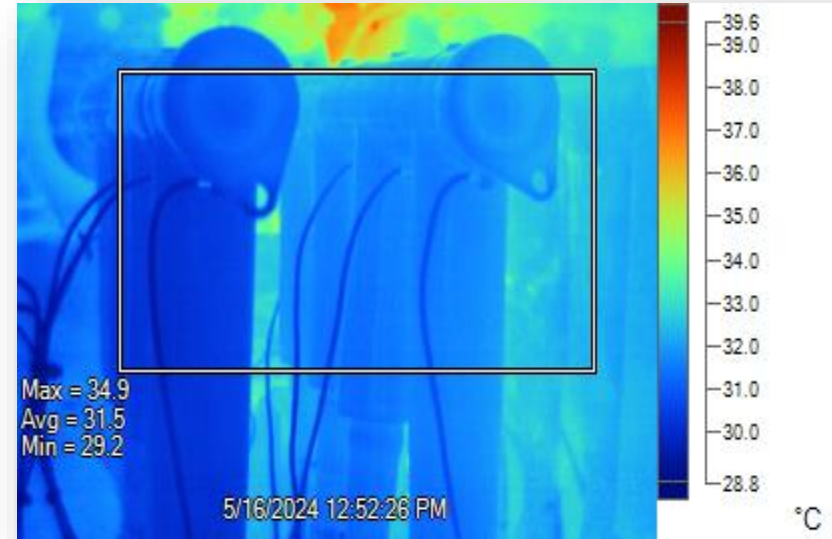
14 May 2024 Circuit was immediately shut down.
Visible discharge was found at the cable lug of the termination.

16 May 2024 After rectification was done, no thermal abnormality and no PD detected.

Comparison of Thermal Scanning

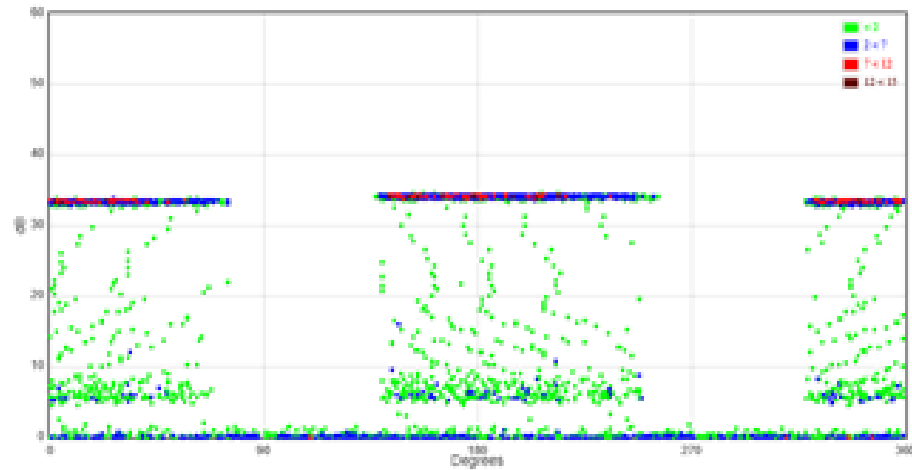


Thermal abnormality was detected before rectification

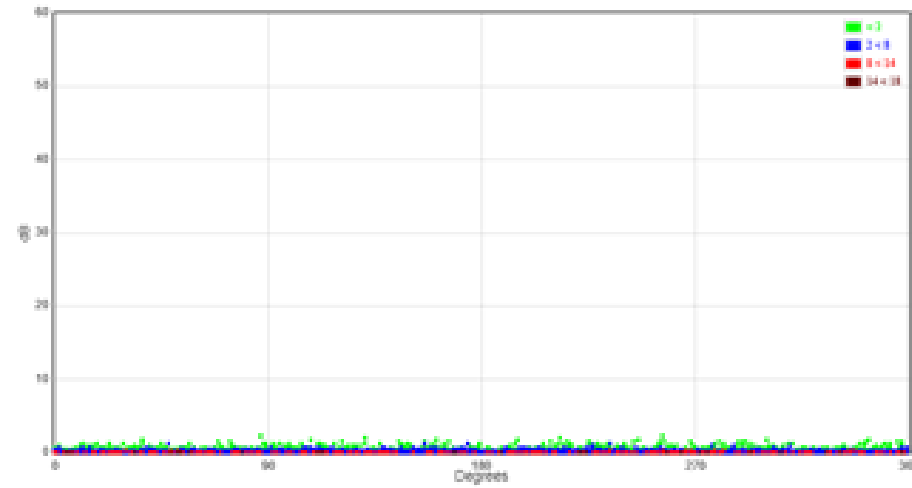


No Thermal abnormality after rectification

Comparison of TEV



PD detected before rectification



No PD detected after rectification