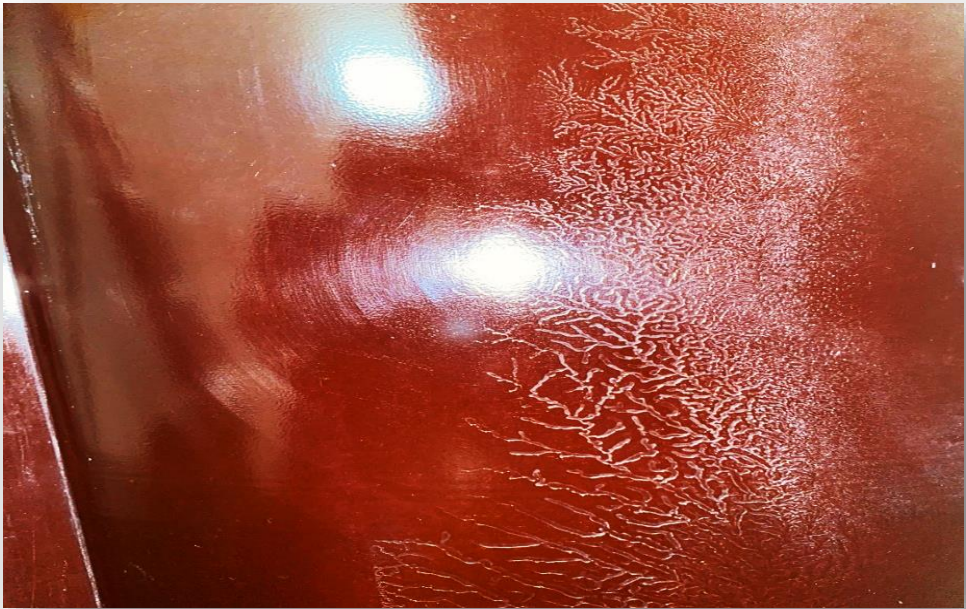
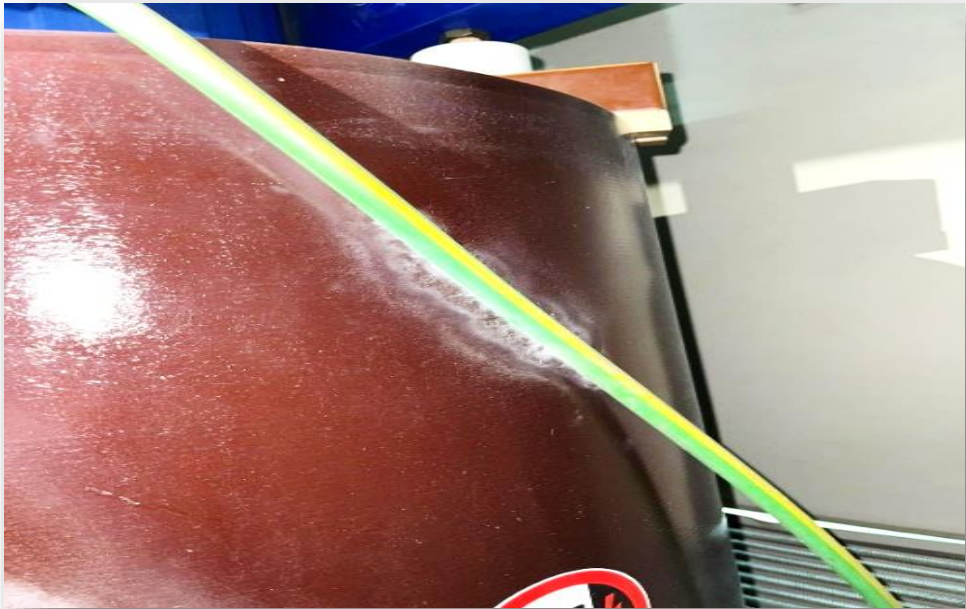


22kV/433V Dry type transformer



Visible discharge at 22kV windings

Asset: 2MVA, 22kV/433V Dry type transformer

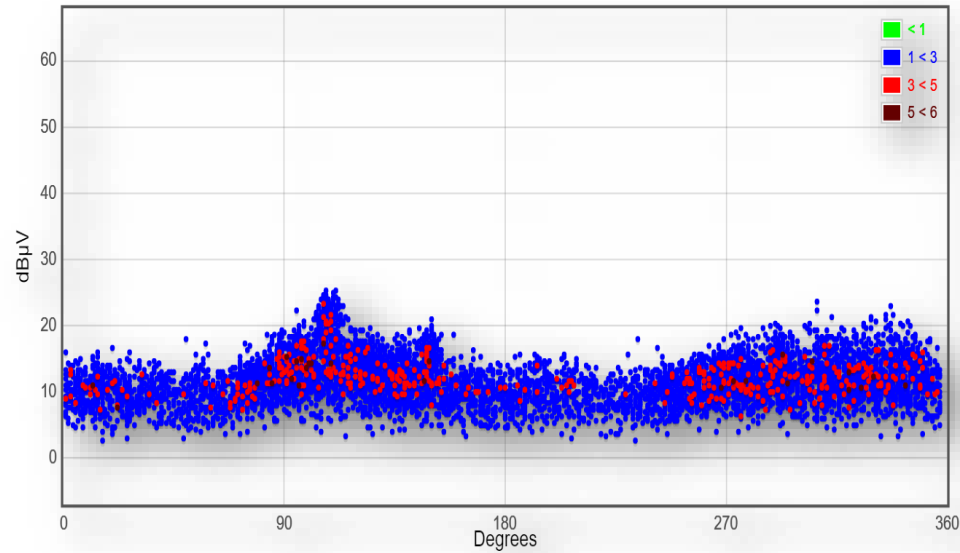
PD sensor: Ultrasound, TEV & UHF antenna

27 August 2021 PD activity was detected at 22kV GIS during routine online PD measurement. However, the detected PD was subsequently located at the connected transformer.

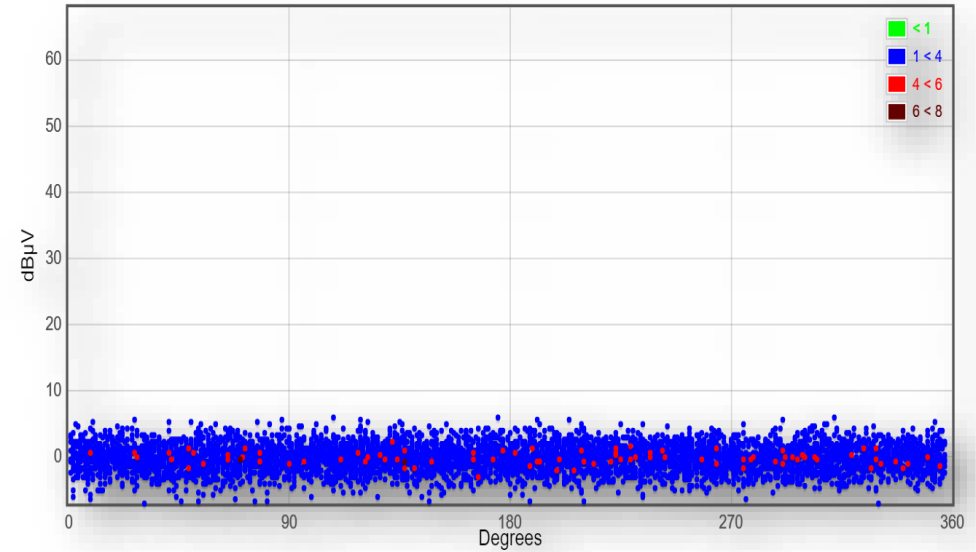
04 September 2021 The transformer was de-energized. Earth cable was found touching to transformer winding and electrical discharge was found at the surface of 22kV windings.

04 September 2021 Online PD measurement was done after rectification of problem. No PD activity found.

Comparison of Ultrasound

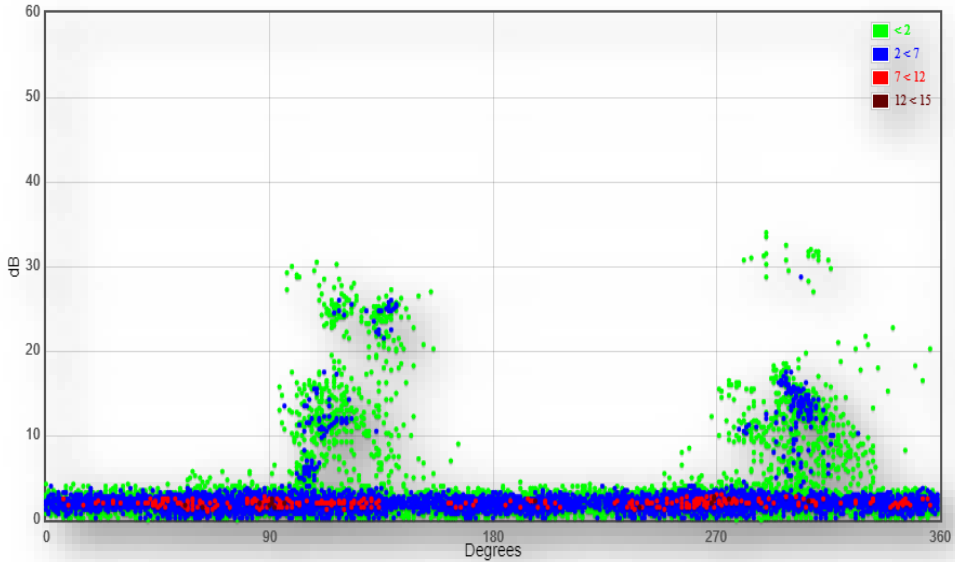


Abnormal Ultrasound

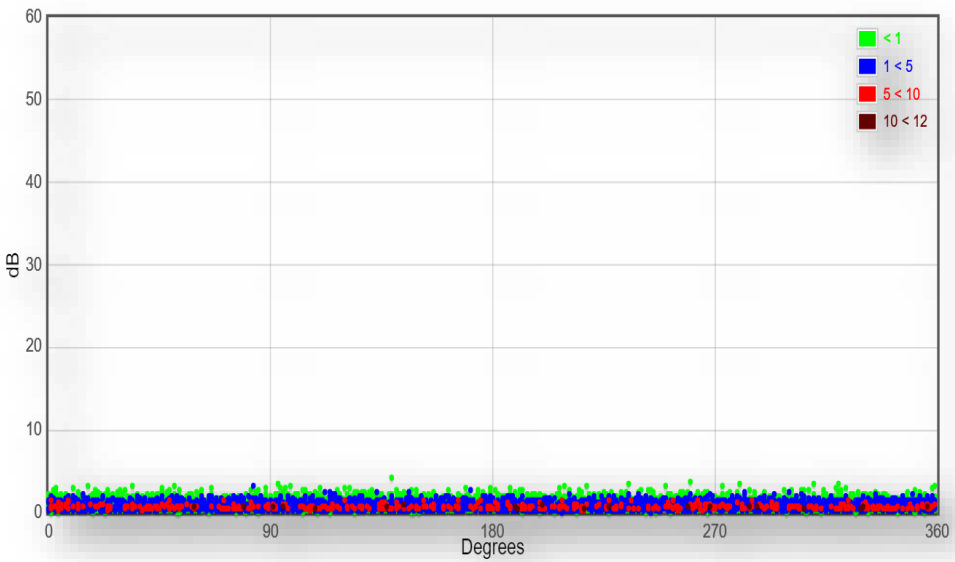


No abnormal ultrasound after rectification

Comparison of TEV measurement

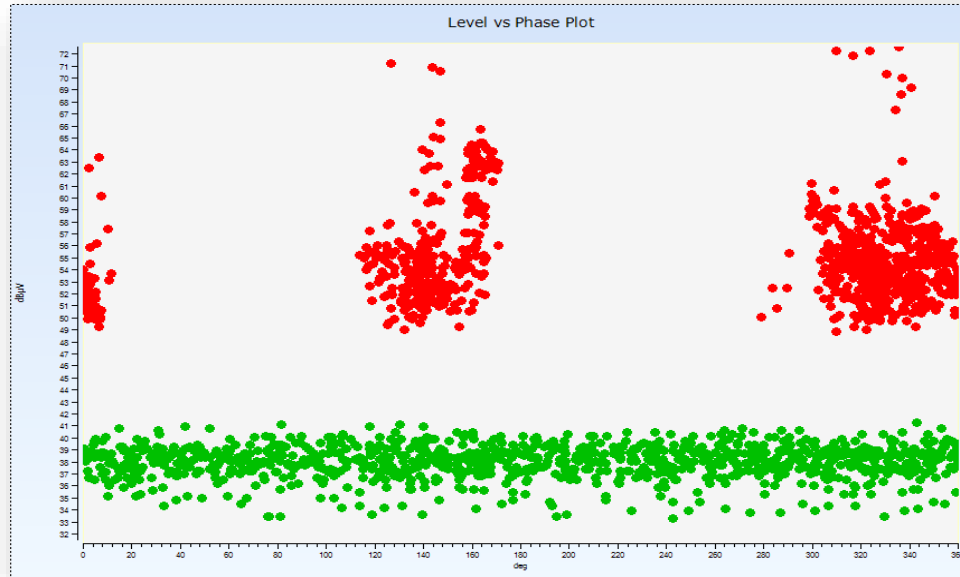


PD detected

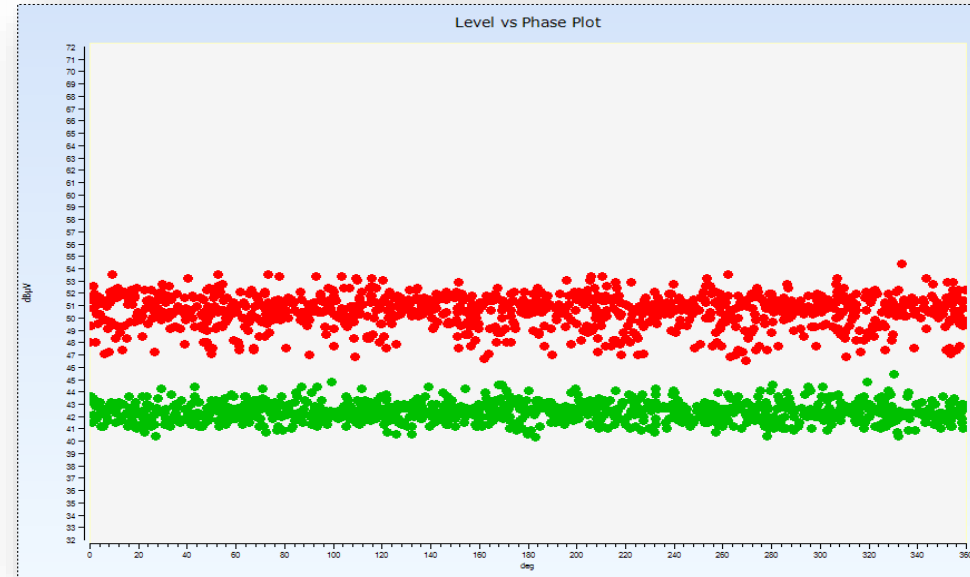


No PD detected after rectification

Comparison of antenna UHF measurements



PD detected



No PD detected after rectification