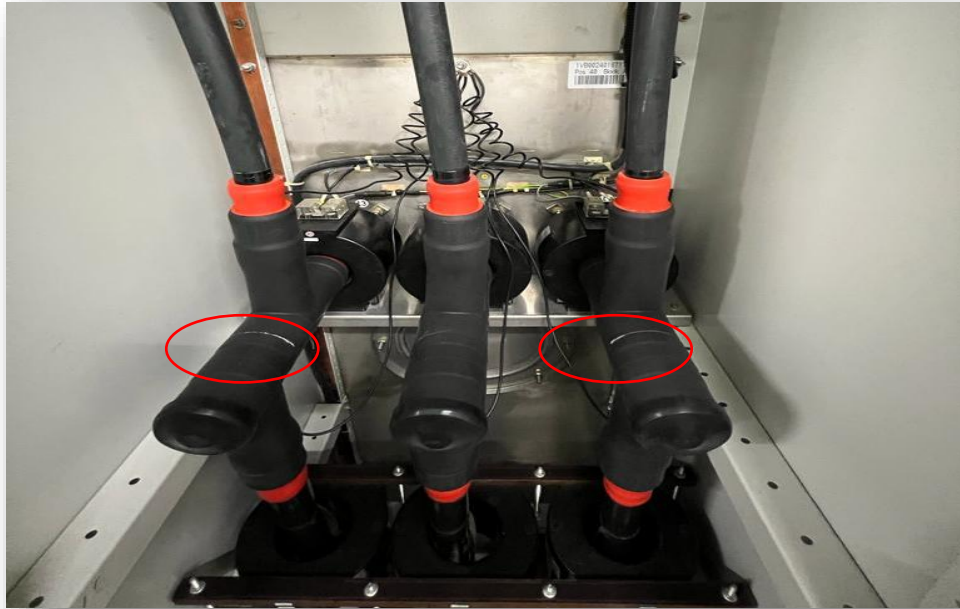


22kV cable termination, outer cone type



Visible cracks at Insulating body

Asset: Insulating body of 22kV cable termination, outer cone type

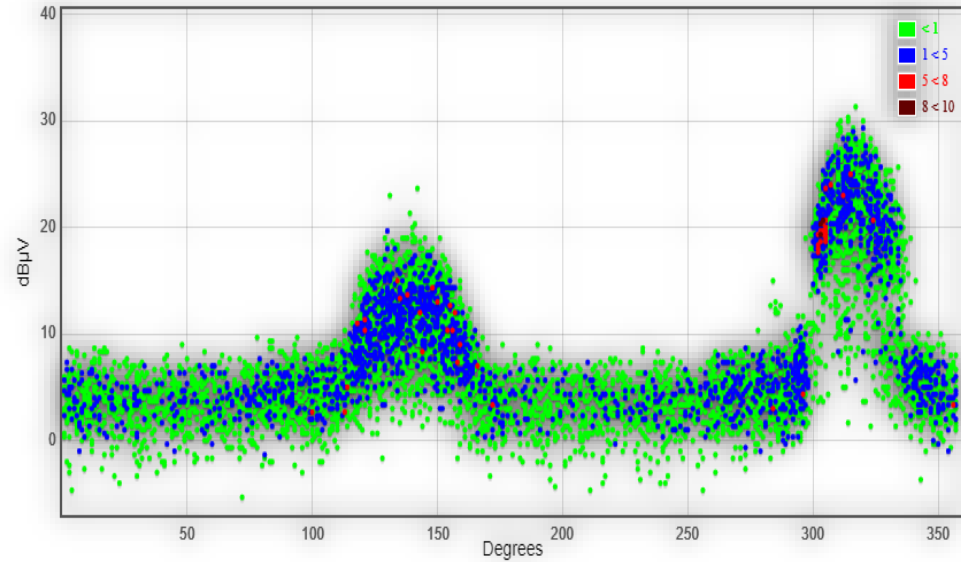
PD sensor: Ultrasound & TEV

24 May 2022 PD activity was detected using airborne ultrasound sensors, Infra-red Thermal scanning and TEV sensor at back panel of GIS.

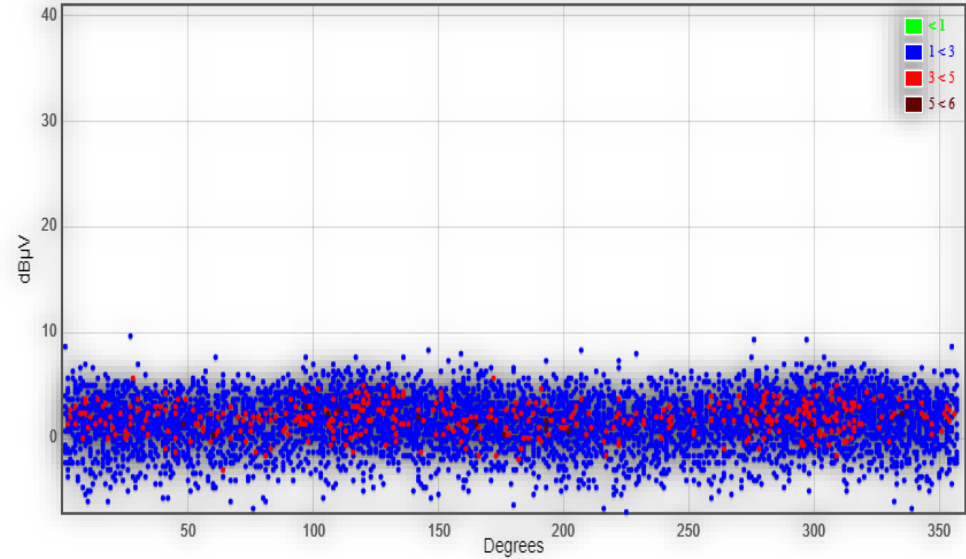
15 June 2022 GIS was de-energized. Visible cracks were found at the cable termination.

15 June 2022: No abnormalities were detected after replacement of the cable terminations.

Comparison of ultrasound

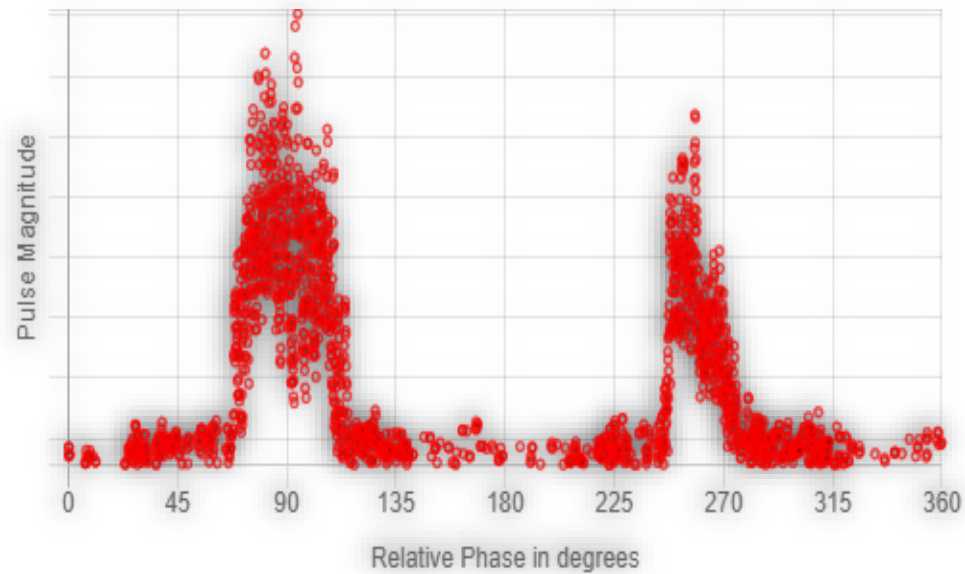


Abnormal Ultrasound

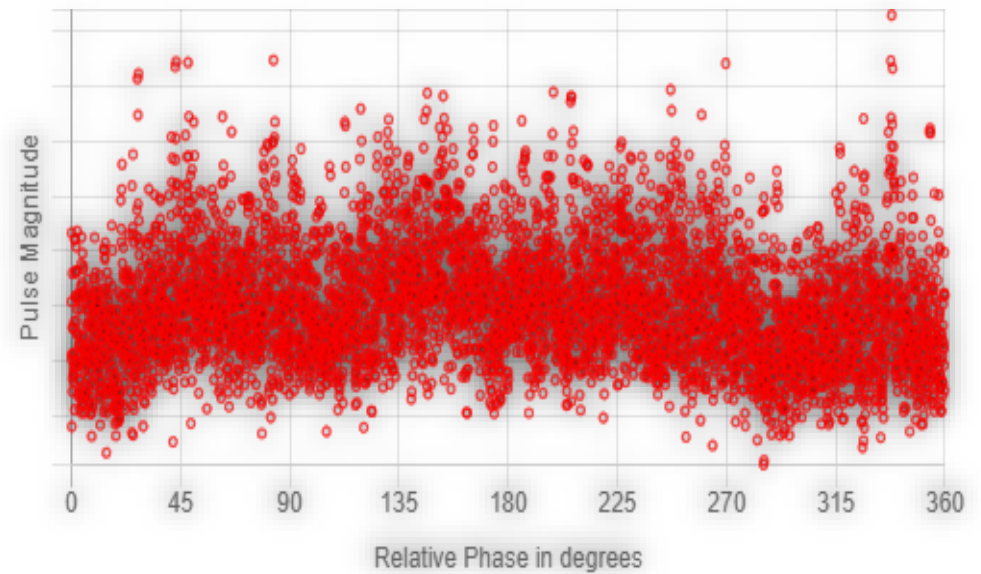


No abnormal ultrasound after replacement of cable termination

Comparison of Ultrasound from another OEM

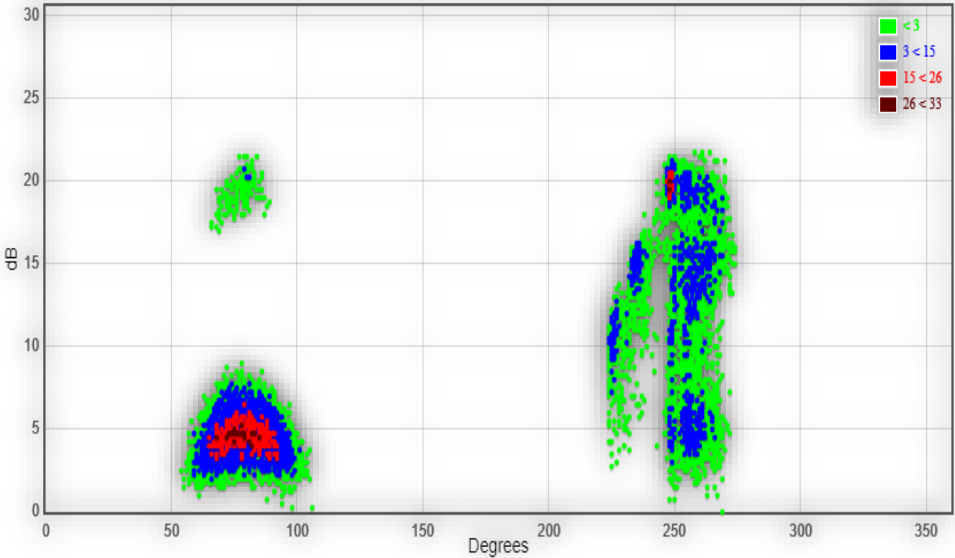


Abnormal Ultrasound

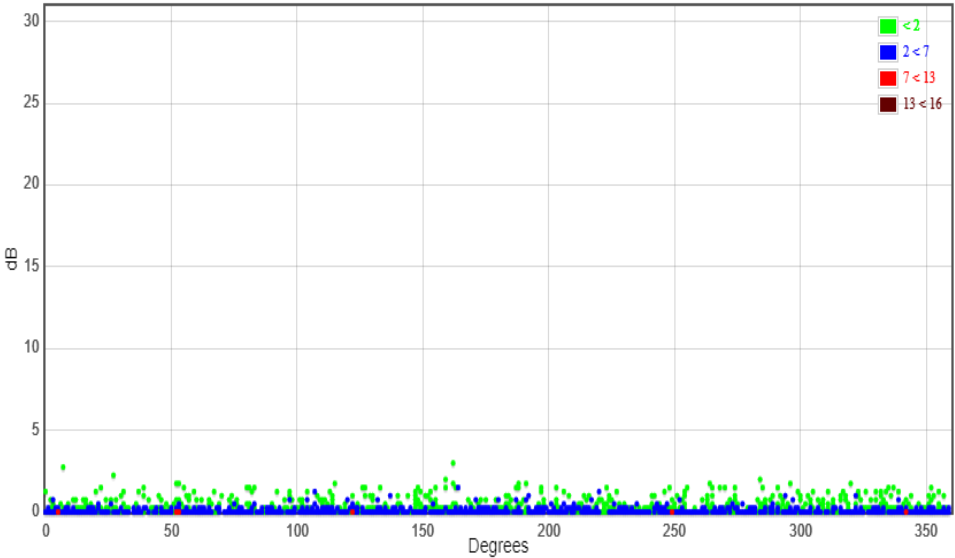


No abnormal ultrasound after replacement of cable termination

Comparison of TEV measurement



PD detected



No PD detected after replacement of cable termination