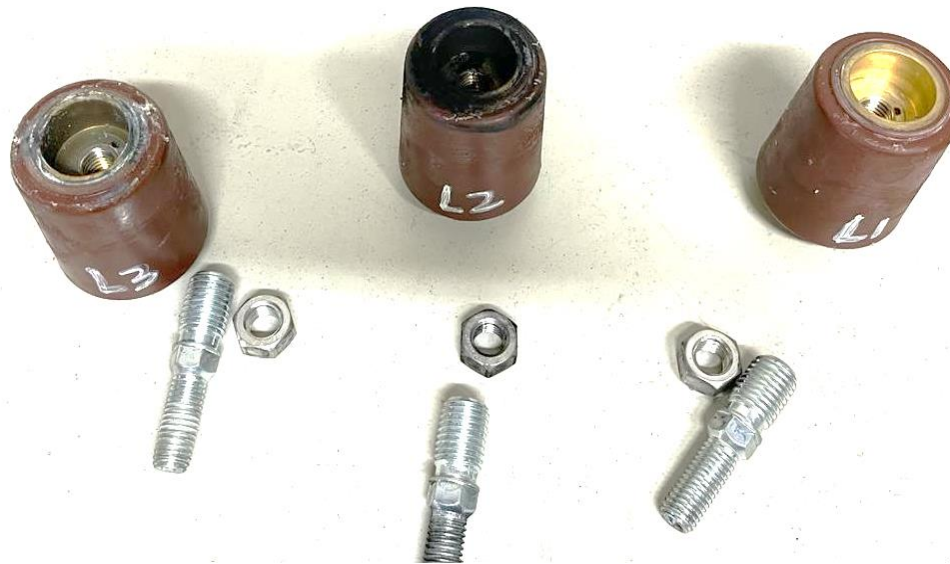


22kV cable termination, outer cone type



Visible discharge at Cable lug



Asset: Cable lug of 22kV cable termination, outer cone type

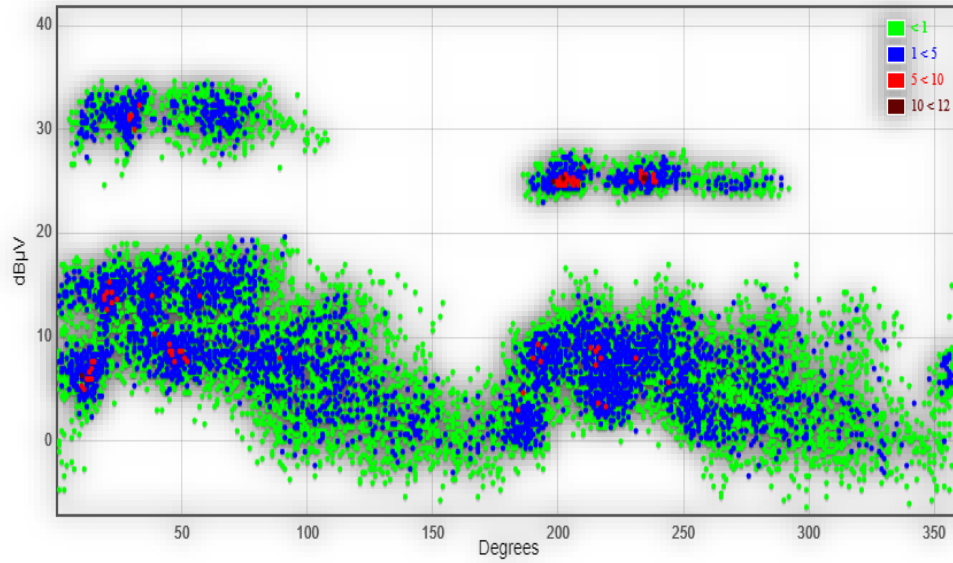
PD sensor: Infra-Red thermal scan, ultrasound, TEV & HFCT

29 November 2022 (0900 Hrs) PD activity was detected at 22kV cable termination of GIS using multiple PD sensor and Infra-Red thermal scanning.

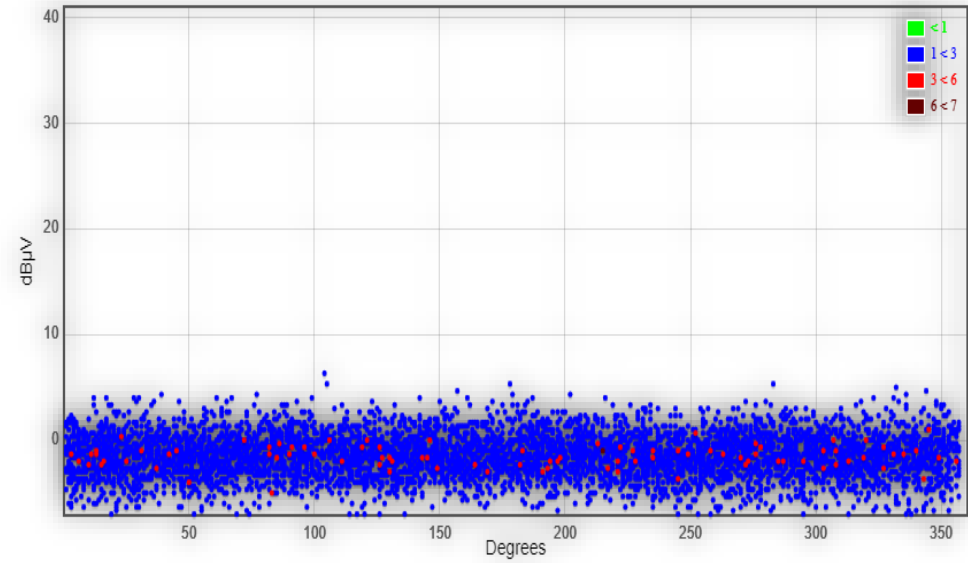
29 November 2022 (2000 Hrs) The circuit was de-energized on the same day. PD was found at 22kV cable termination.

30 November 2022 Online PD re-measurement was done after replacement of cable terminations. No PD activity found.

Comparison of ultrasound

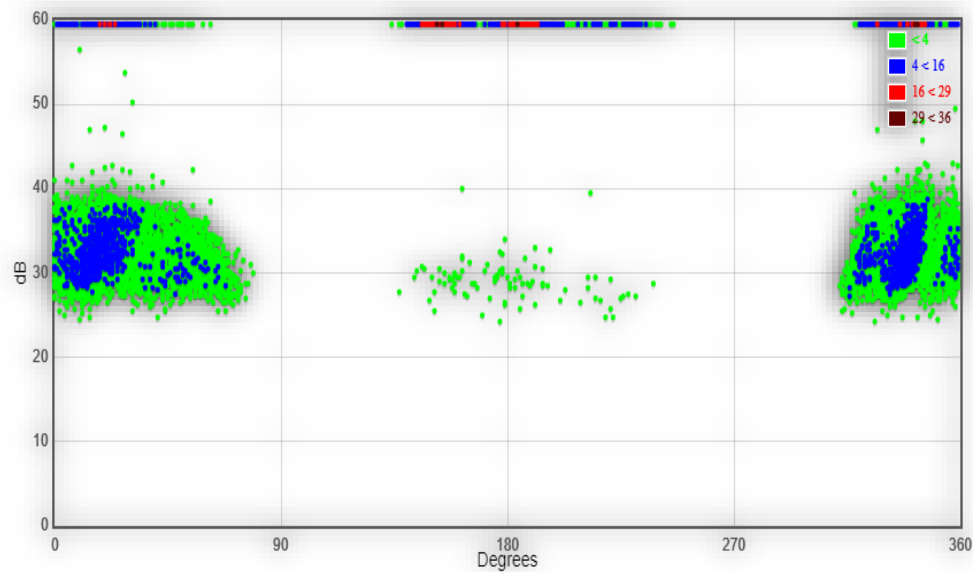


Abnormal ultrasound

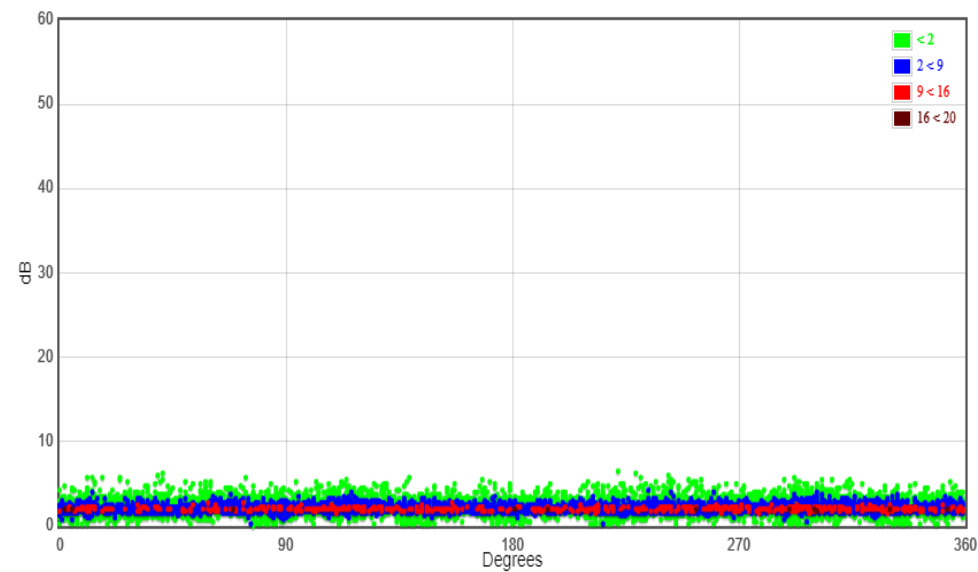


No abnormal ultrasound after replacing of cable termination

Comparison of TEV measurement

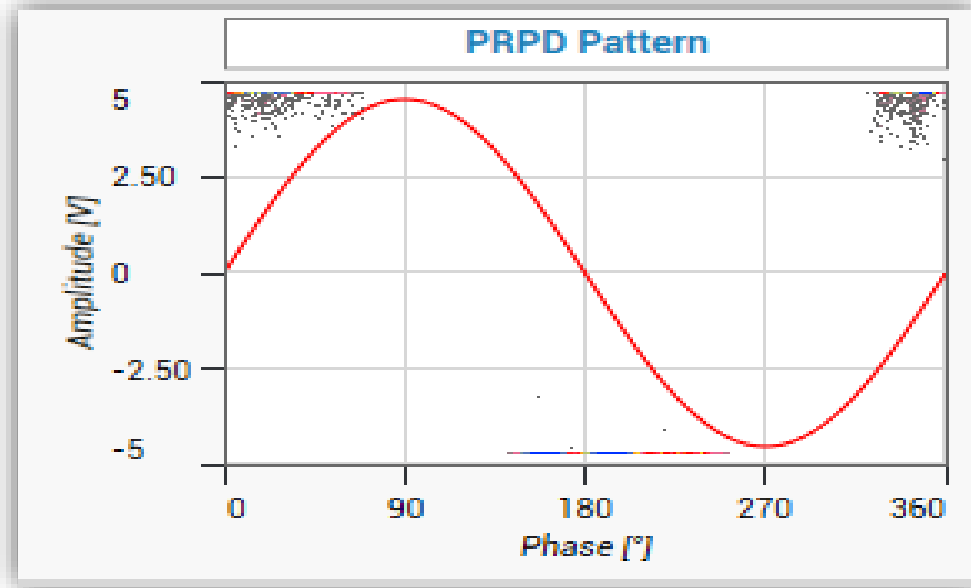


PD detected

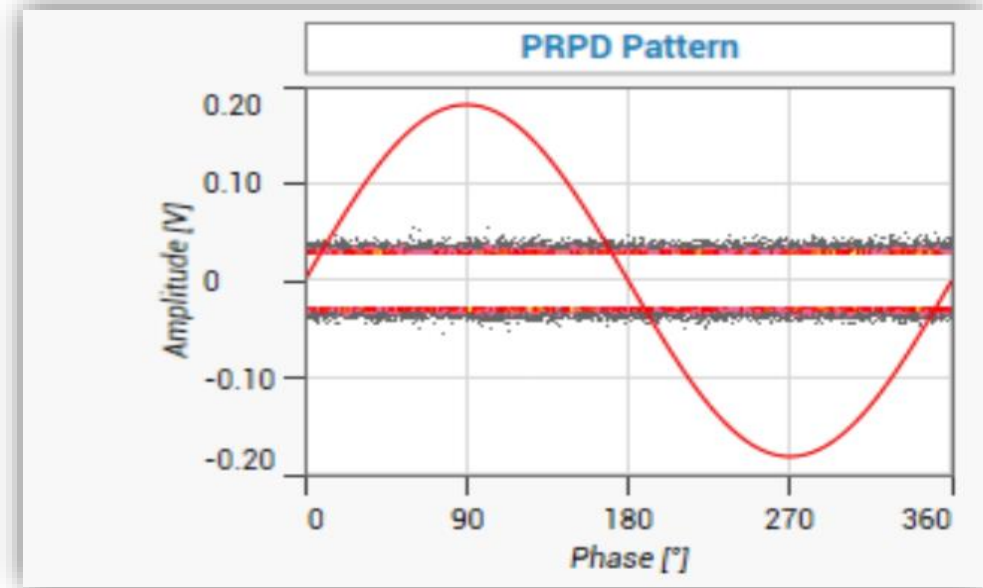


No PD detected after replacement of cable termination

Comparison of HFCT measurement

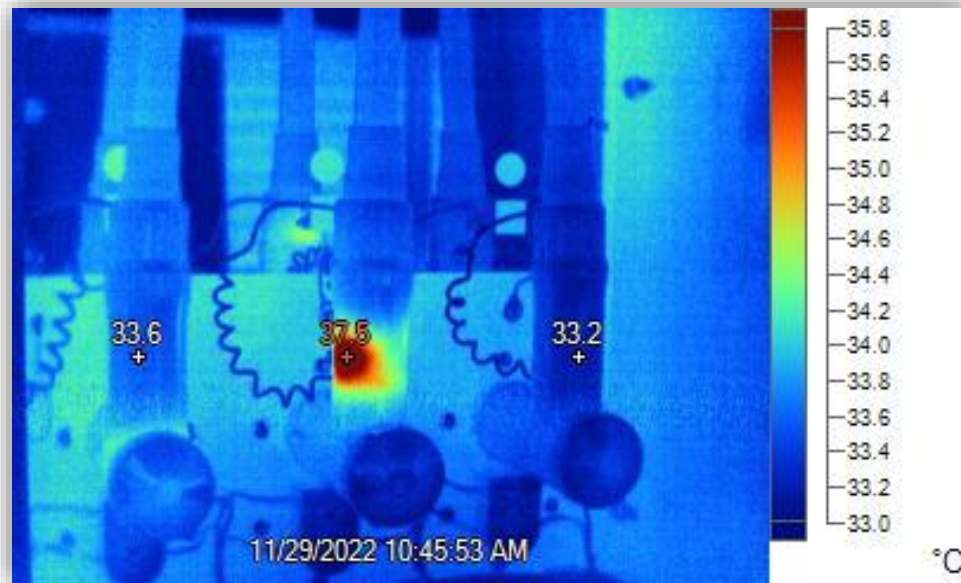


High PD detected at 5 volts magnitude

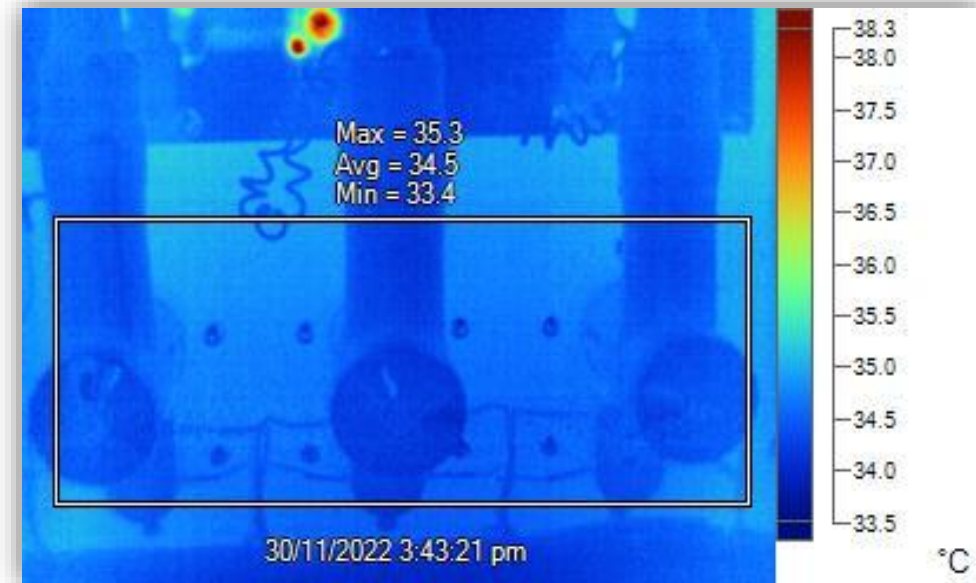


No PD detected after replacement of cable termination

Comparison of Infra-Red Thermal Scan



Thermal Abnormality detected



No Thermal Abnormality detected after replacement of cable termination